

- Living Room
- Bedroom (in a separate room)
- Bathroom
- Terrace with pool access or balcony

# Apartment **1-Bedroom**

**68.44 - 83.44m<sup>2</sup>**

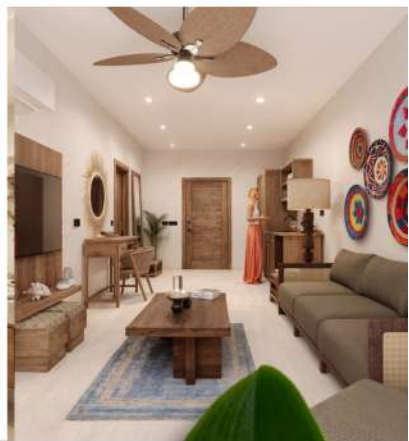
Perfect for those looking for more privacy in their space!

**24.64m<sup>2</sup>** | Living Room  
**15.04m<sup>2</sup>** | Bedroom  
**8.96m<sup>2</sup>** | Bathroom  
**19.80m<sup>2</sup>** | Terrace +  
**15.00m<sup>2</sup>** | Pool / or  
**19.80m<sup>2</sup>** | Balcony  
  
**Total** | **68.44 / 83.44m<sup>2</sup>**



from **68.44 m<sup>2</sup>** to **83.44 m<sup>2</sup>**

up to **25% ROI**



Scan me. Dive into a realm of unique opportunities.

